

CHILD CARE NEEDS ASSESSMENT

December 2015



LETTER FROM CO-CHAIRS

The Local Planning Council (LPC) of Ventura County is the united voice for early care and education. The LPC members are committed to continued collaboration with the early care and education community to broaden the access, availability, and quality of programming for our youngest learners.

The 2015 LPC Needs Assessment is an important planning tool for understanding Ventura County's early care and education landscape, providing significant information for legislators, planners, providers and community organizations regarding the availability of quality care and child care subsidies along with the indication of unmet need. This snapshot of data is captured at an important time in Ventura County's development of a robust early care and education system, where much is changing and challenging.

Since the last needs assessment in 2010, Ventura County's early care and education system has been faced with serious threats. The economic recession led to fewer families accessing services.

The State and County are beginning to restore spaces. At the same time, significant investments in high-quality programming are being made through federal, state, and local quality initiatives. Research is mounting regarding the importance of quality early education and expanded learning opportunities. Children who receive high quality early care and education experiences are more likely to have more advanced language, academic and social skills. Along with benefiting children, high quality care supports the economic success of families in Ventura County.

Renewed investments in early learning combined with a heightened national awareness of early care and education needs has us hopeful for expanding opportunities in the near future.

Dr. Carola Matera and
Adria Taha-Resnick, Co-Chairs



| | |
|---|----|
| Letter from Co-Chairs | 2 |
| Introduction | 4 |
| Demographic Trends | |
| Population | 5 |
| Ethnicity | 6 |
| Economic Trends | 7 |
| Cost of Living | 8 |
| Public Assistance | 9 |
| Special Populations | |
| Special Needs | 10 |
| Migrant | 11 |
| Abuse and Neglect | 12 |
| Child Care Delivery System | 13 |
| Subsidized Child Care in Ventura County | 15 |
| Child Care Supply | 16 |
| Child Care Demand | 19 |
| Child Care Cost | 19 |
| What is Quality? | 20 |
| Where is Quality? | 21 |
| Conclusions | 22 |
| Local Planning Council Membership | 23 |





Vision and Mission

The Local Planning Council (LPC) is the united voice for early care and education in Ventura County and actively plans for access to quality child care based upon the needs of children and families.

Structure and Purpose

With a focus on high-quality programming, the Council is tasked with assessing local child care needs, developing a countywide strategic plan, setting priorities for use of state funds, and facilitating the temporary and voluntary transfer of funds between state-funded agencies. The LPC is funded by the California Department of Education and is currently operating with a 50% reduction in funding that went into effect in 2010. Members are appointed by the Ventura County Board of Supervisors and the Ventura County Superintendent of Schools.

Background

In 1991, Congress established federal Child Care and Development Block Grants (CCDBG) through which each state was allocated funds to assist low-income families in obtaining child care and development services. As a result, a plan was developed to ensure that California would have a local voice to establish priorities in the allocation of CCDBG funds in each community.

During this same year, California State Assembly Bill 2141 passed, establishing the creation of a LPC in every county. LPC's membership and responsibilities were revised in 1997 as mandated by Assembly Bill 1542.

State Mandates

The mandated work of Local Planning Councils is outlined in California Education Code 8499 – 8499.7:

- Complete a countywide Needs Assessment a minimum of every five (5) years
- Develop a Strategic Plan based on the findings of the Needs Assessment
- Foster partnerships designed to meet local child care needs
- Establish county priorities for child care funding
- Distribute Transitional Kindergarten funds for ECE professional development
- Administer AB 212 supporting retention and degree attainment in the ECE field
- Facilitate the voluntary, temporary transfer of contract funds to maximize fiscal resources and utilization of child development funding

The 2015 Ventura County Child Care Needs Assessment is the fourth assessment of child care needs in Ventura County published by the LPC. **The overall purpose of this needs assessment is to re-assess child care needs in Ventura County and to identify new and continuing gaps in the child care delivery system.**

Key Trends

- 846,178 Ventura County residents
- 5.8 % of the population in 2014 was under 5 years of age
- 12.3 % of the population in 2014 was between 5-14 years of age.

Source: U.S. Census Bureau, American Community Survey, 2014

Ventura County Population

| City | 2010 | 2014* |
|-----------------------|----------------|----------------|
| Camarillo | 65,201 | 66,923 |
| Fillmore | 15,002 | 15,420 |
| Moorpark | 34,421 | 35,550 |
| Ojai | 7,461 | 7,627 |
| Oxnard | 197,899 | 205,437 |
| Port Hueneme | 21,723 | 22,139 |
| Santa Paula | 29,321 | 30,441 |
| Simi Valley | 124,237 | 126,871 |
| Thousand Oaks | 126,683 | 129,342 |
| Ventura | 106,433 | 109,484 |
| Unincorporated County | 94,937 | 96,944 |
| Total | 823,318 | 846,178 |

Sources: U.S. Census Bureau, 2010; *U.S. Census Bureau, American Community Survey, 2014

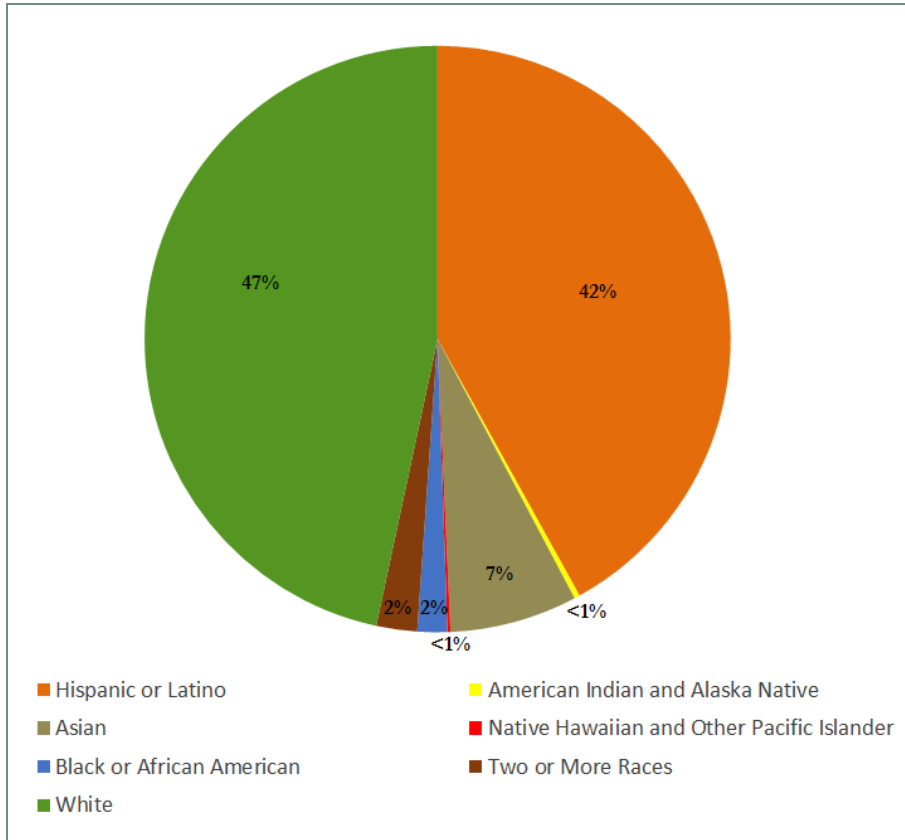


| City | Under 5 | Ages 5-9 | Ages 10-14 | Ages 0-14 |
|---------------|---------------|---------------|---------------|----------------|
| Camarillo | 3,994 | 4,060 | 4,518 | 12,571 |
| Fillmore | 1,538 | 1,689 | 1,206 | 4,432 |
| Moorpark | 2,117 | 2,429 | 2,915 | 7,462 |
| Ojai | 323 | 541 | 451 | 1,315 |
| Oxnard | 17,163 | 15,966 | 14,369 | 47,499 |
| Port Hueneme | 1,613 | 1,482 | 1,395 | 4,491 |
| Santa Paula | 2,612 | 2,464 | 2,642 | 7,719 |
| Simi Valley | 7,488 | 8,237 | 8,986 | 24,711 |
| Thousand Oaks | 5,731 | 9,170 | 9,170 | 24,070 |
| Ventura | 6,883 | 6,130 | 6,668 | 19,682 |
| Total | 49,464 | 52,168 | 52,320 | 153,952 |

Source: U.S. Census Bureau, American Community Survey, 2014

ETHNICITY

Ventura County Ethnicity



Key Trends

- California's 0-5 population is ethnically and racially diverse; 52% are Latino, 27% are White, 11% are Asian American, 6% are African American, and 4% are from other ethnicities *
- In Ventura County:
 - The percentage of Latino residents increased from 33.4% in 2000 to 42% representing 355,251 residents **
 - 44.3% of the households report speaking a language other than English at home ***
 - Latino 3 and 4 year-olds are the least likely among the racial/ethnic groups to attend preschool *

Sources: *Children Now 2014; **US Census Bureau, American FactFinder 2015; ***American FactFinder 5-Year Estimates 2009-2013

Population by City and by Ethnicity

| | Asian-American | African-American | Hispanic or Latino | Native American | Native Hawaiian | White | Other | Multi-Racial |
|---------------|----------------|------------------|--------------------|-----------------|-----------------|-------|-------|--------------|
| Camarillo | 10.1% | 1.9% | 25.4% | 0.1% | 0.2% | 59.5% | 0.1% | 2.7% |
| Fillmore | 0.6% | 0.1% | 76.7% | 0.3% | 0.2% | 21.6% | 0.1% | 0.4% |
| Moorpark | 6.5% | 0.7% | 31.7% | 0.2% | 0.0% | 58.9% | 0.1% | 1.9% |
| Ojai | 1.2% | 0.1% | 19.0% | 0.0% | 0.0% | 77.2% | 0.2% | 2.3% |
| Oxnard | 7.2% | 2.7% | 73.5% | 0.3% | 0.1% | 14.8% | 0.1% | 1.3% |
| Port Hueneme | 5.1% | 4.5% | 52.6% | 0.6% | 0.8% | 33.0% | 0.1% | 3.3% |
| Santa Paula | 1.6% | 0.1% | 77.5% | 0.2% | 0.1% | 19.8% | 0.1% | 0.6% |
| Simi Valley | 9.1% | 1.2% | 24.0% | 0.2% | 0.2% | 61.6% | 0.2% | 3.5% |
| Thousand Oaks | 9.5% | 1.0% | 18.1% | 0.1% | 0.1% | 68.5% | 0.1% | 2.6% |
| Ventura | 3.4% | 1.5% | 32.2% | 0.3% | 0.2% | 59.8% | 0.4% | 2.2% |

Source: US Census Bureau, American Community Survey, 2013

Key Trends

- 7.4% unemployment rate in California as of June 2014
- 6.2% unemployment rate in Ventura County as of June 2014
- 11% of Ventura County residents live in poverty*
- 18% of children 0-5 live in poverty*
- Economic difficulties across all spectrums of the population – high unemployment rates, decreased household incomes – coupled with the high cost of living in Ventura County have negatively impacted the ability of families to access high-quality child care

Sources: State of California Employment Development Department, 2014; *Resource & Referral Network, 2015



2013-14 Earnings and Employment

| | Median Earnings Per Household* | Unemployment Rate | Below Poverty Level |
|---------------|-----------------------------------|----------------------|------------------------|
| Camarillo | \$89,641 | 4.4% | 6.5% |
| Fillmore | \$55,776 | 8.7% | N/A |
| Moorpark | \$97,815 | 5.8% | 7.1% |
| Ojai | \$60,157 | 7.2% | N/A |
| Oxnard | \$60,693 | 8.6% | 16.5% |
| Port Hueneme | \$53,284 | 7.3% | 20.9% |
| Santa Paula | \$54,068 | 10.5% | 16.7% |
| Simi Valley | \$84,673 | 5.1% | 6.7% |
| Thousand Oaks | \$101,417 | 4.8% | 6.7% |
| Ventura | \$67,514 | 5.6% | 10.3% |

Sources: County of Ventura Human Services Agency 2013-2014 Annual Report; *www.citydata.com, 2015

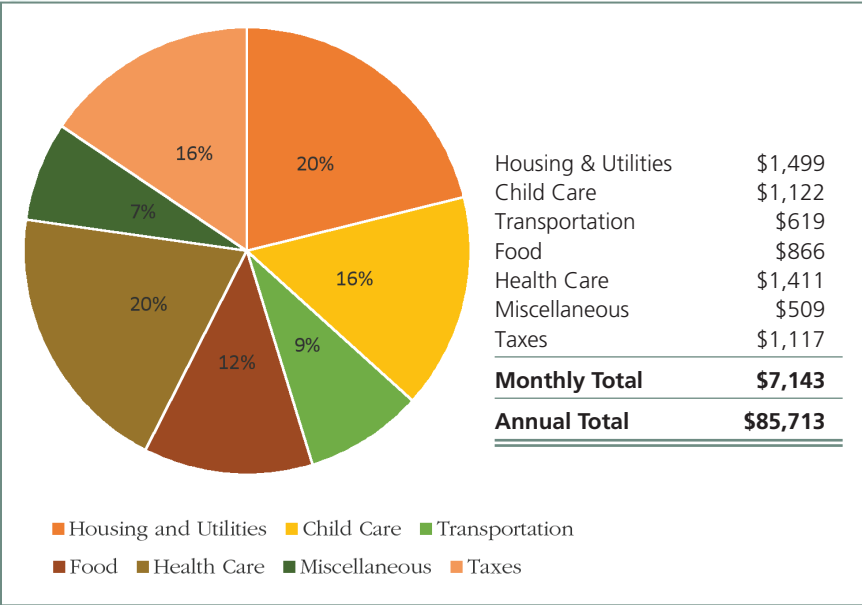


Key Trends

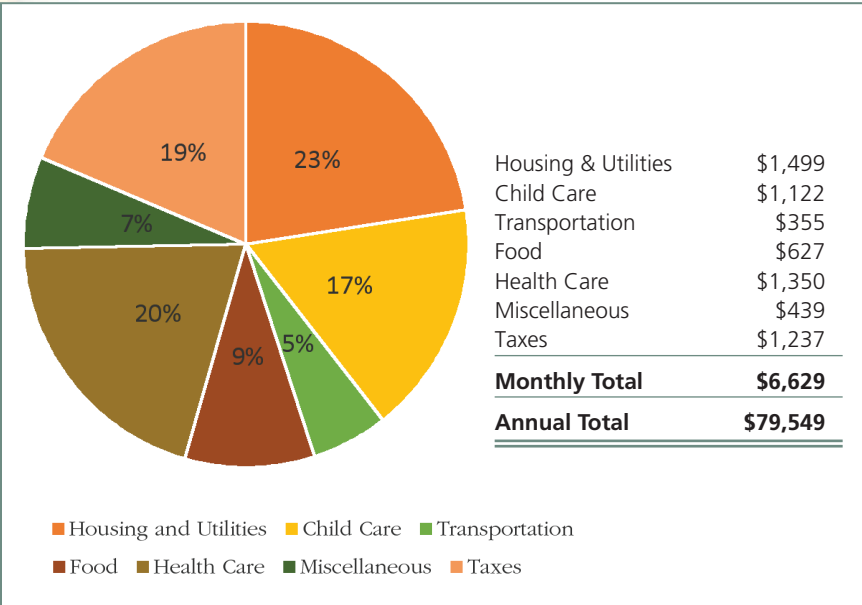
- A family of four in Ventura County with two children and two working adults needs an annual income of \$85,713 or \$7,143 per month for a modest standard of living
- A single parent family with two children in Ventura County needs an annual income of \$79,549 or \$6,629 per month for a modest standard of living

Source: California Budget Project, *Making Ends Meet*; 2013

Monthly Cost of Living Two Working-Parent Family of 4



Monthly Cost of Living Single Working-Parent Family of 3



Medi-Cal

Medi-Cal offers free or low-cost health coverage for California residents who meet eligibility requirements

- 204,833 individuals receive Medi-Cal with the expansion of the Affordable Care Act; this is an increase of 72% from June 2013 (119,279)

WIC

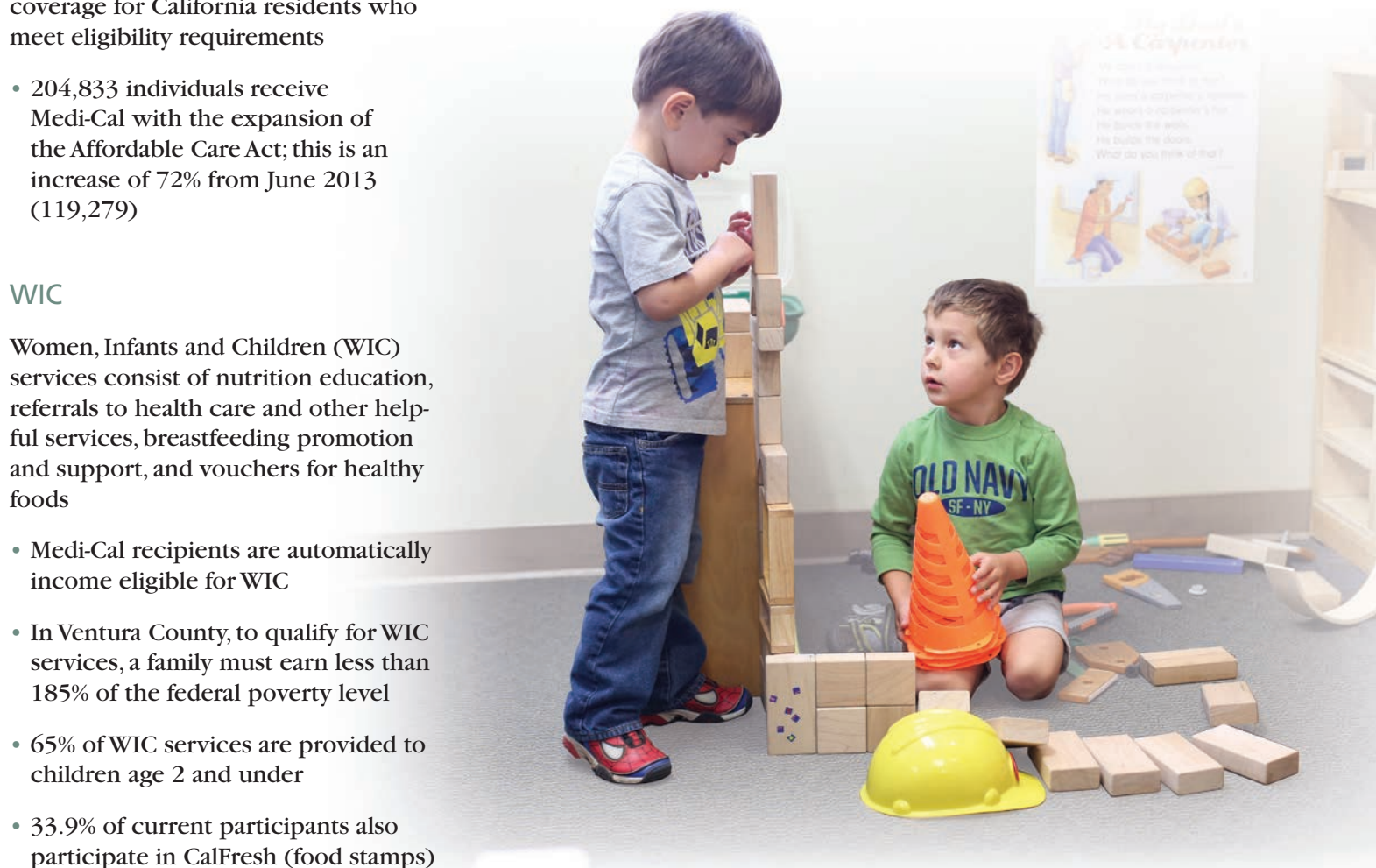
Women, Infants and Children (WIC) services consist of nutrition education, referrals to health care and other helpful services, breastfeeding promotion and support, and vouchers for healthy foods

- Medi-Cal recipients are automatically income eligible for WIC
- In Ventura County, to qualify for WIC services, a family must earn less than 185% of the federal poverty level
- 65% of WIC services are provided to children age 2 and under
- 33.9% of current participants also participate in CalFresh (food stamps)

WIC Numbers by Ages 0-5

| WIC Office Locations | 0 | 1 | 2 | 3 | 4 | 5 | Total |
|-----------------------|--------------|--------------|--------------|--------------|--------------|------------|---------------|
| Downtown Oxnard | 644 | 480 | 446 | 468 | 438 | 47 | 5,465 |
| Fillmore | 207 | 160 | 164 | 153 | 152 | 15 | 1,136 |
| North Oxnard | 1,031 | 713 | 687 | 571 | 560 | 45 | 1,635 |
| Santa Paula | 411 | 308 | 318 | 299 | 275 | 24 | 1,608 |
| Simi Valley | 449 | 345 | 317 | 243 | 235 | 19 | 2,100 |
| South Oxnard | 1,381 | 1,005 | 1,009 | 1,021 | 961 | 88 | 3,607 |
| Thousand Oaks | 300 | 236 | 213 | 191 | 182 | 14 | 2,523 |
| Ventura | 632 | 442 | 358 | 347 | 295 | 26 | 851 |
| Total | 5,055 | 3,689 | 3,512 | 3,293 | 3,098 | 278 | 18,925 |
| % County Total | 27% | 19% | 19% | 17% | 16% | 2% | |

Source: US Census Bureau, American Community Survey, 2013



SPECIAL POPULATIONS

Special Needs

Children 0-36 Months

Children ages 0-36 months with developmental delays are served by the Ventura County Early Start Program, which is collaboratively administered by Tri-Counties Regional Center as the lead agency and Ventura County Special Education Local Plan Area (SELPA). Eligibility for Early Start includes a 33% delay in one or more areas of development, or conditions with an established or high risk for developmental delay or disability.

SELPA provides services for eligible children with “Solely Low Incidence” disabilities through regional infant and toddler programs: Deaf/Hard of Hearing, Visual Impairment, and Orthopedic Impairment.

The Regional Center serves all other eligible children, approximately 2,000, at any one time.

SELPA December 1, 2014

| | Children Ages 0-5 | Children Ages 6-17 |
|------------------------------------|----------------------|-----------------------|
| Briggs Elementary | 3 | 35 |
| Conejo Valley Unified | 199 | 1731 |
| Fillmore Unified | 47 | 416 |
| Hueneme Elementary | 171 | 751 |
| Las Virgenes Unified | 106 | 1120 |
| Mesa Union Elementary | 5 | 70 |
| Moorpark Unified | 86 | 766 |
| Mupu Elementary | 1 | 16 |
| Oak Park Unified | 28 | 334 |
| Ocean View | 40 | 203 |
| Ojai Unified | 24 | 390 |
| Oxnard Elementary | 397 | 1250 |
| Oxnard Union High | 1 | 1515 |
| Pleasant Valley | 173 | 760 |
| Rio Elementary | 74 | 358 |
| Santa Clara Elementary | 1 | |
| Santa Paula Unified | 77 | 574 |
| Simi Valley Unified | 311 | 1817 |
| Somis Union | 9 | 21 |
| Ventura County Office of Education | 130 | 585 |
| Ventura Unified | 225 | 1374 |
| Total | 2,108 | 14,086 |

Source: Ventura County Office of Education, SELPA, Tri-Counties Regional Center

Children 3-5 Years Old

Children 3-5 years old with special needs that meet criteria for special education eligibility under state and federal laws are provided special education services by local school districts and the Ventura County Office of Education.

Other Ventura County agencies serving children 0-5 years old:

- Tri-Counties Regional Center - Serves children who are over three years old and with medically diagnosed developmental disabilities
- Ventura County Behavioral Health - Serves Children with emotional and behavioral disabilities
- California Children Services - Serves children with health and medical disabilities
- Child Development Resources/Early Head Start and Head Start - Serves children with Head Start eligible disabilities enrolled in CDR Programs

Children 5 Years and Older

- Children 5 years and older are served through local school districts

Migrant

Migrant Child Care and Development Programs serve the children of agricultural workers while their parents are at work. An agricultural worker family has earned at least 50% of its total gross income from employment in fishing, agriculture or agriculturally-related work during the twelve-month period immediately preceding the date of application for child care and development services. Ventura County offers migrant families the following child care options:

Migrant Education Program (MEP)

- The Migrant Education Program (MEP) serves ages 3-21 in Ventura County
- During the 2014-2015 school year, MEP served 650 prekindergarten children in 11 school districts

California Migrant Child Care and Development Program (CMIG)

- California's Migrant Child Care and Development Program (CMIG) serves children of agricultural worker families while their parents work
- Eligible families receive public assistance; are income eligible; are homeless; and/or have a child at risk of abuse, neglect, exploitation or is receiving child protective services
- CMIG contracts with Child Development Inc. (CDI) to provide migrant child care services. In the 2014-15 fiscal year, CDI served 63 migrant preschool children at 3 child care centers

*CMIG numbers represent funded spaces only and do not include all migrant families who may be enrolled under other funding sources

Migrant & Seasonal Head Start (MSHS)

- Migrant & Seasonal Head Start (MSHS) in Ventura County is administered through the Community Action Partnership of San Luis Obispo, Inc. (CAPSLO)
- CAPSLO MSHS Programs provide services to children 0-5 years of age through its Federal Head Start grant
- During the 2014 -2015 school year, the MSHS Programs provided full-day child care services to 143 children in Ventura County

Source: Data provided by individual agency representatives



Abuse and Neglect

Key Trends

- From 2009-2012 there was a steady increase in the rate of child abuse and neglect reports
- From 2012 to 2013 there was a slight decline in cases reported
- In 2013, there were 52.3 child abuse and neglect reports per 1,000 children under 18 years in Ventura County
- 7.4 child abuse and neglect reports were substantiated per 1,000 children during this same time period
- Children 6-10 years (26.4% of cases) comprised the largest percentage of substantiated child abuse cases, followed by children ages 3-5 years (20.5% of cases), and then ages 11-15 years (19.3% of cases)

Children Who Are Abused, Neglected, or At-Risk of Abuse/Neglect

The state of California defines child abuse and neglect as non-accidental physical injury; sexual abuse or exploitation; willful cruelty or unjustifiable punishment; or neglect, including failure to provide adequate food, clothing, shelter, medical care, or supervision.

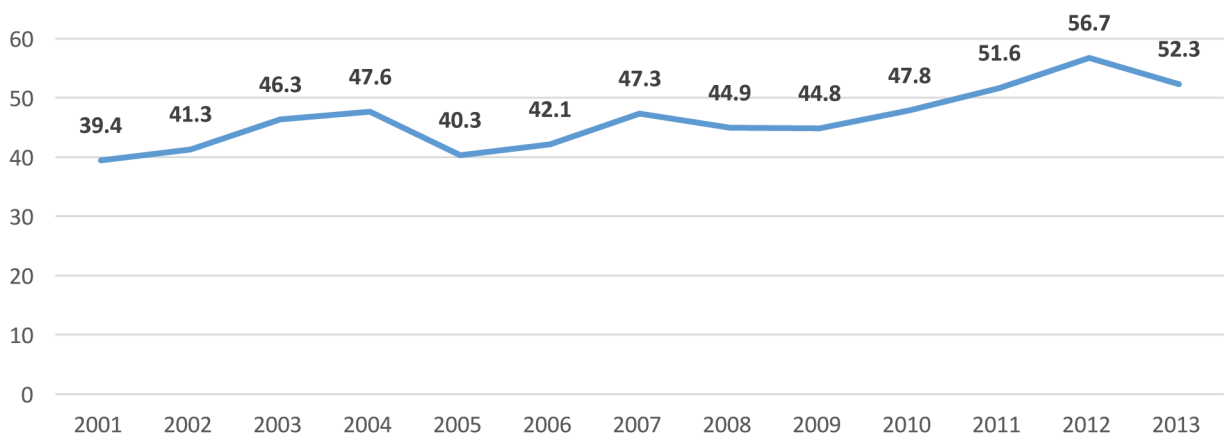
The Ventura County Human Services Agency - Children and Family Service (Child Protective Services) provides intervention services in cases of child abuse and neglect in Ventura County.

When a report of child maltreatment indicates the need for protection, Child Protective Services works to provide alternate placement; placement into foster care is one option.

Source: Ventura County Public Health *VC-Pact Trend Report*, 2015



Child Abuse and Neglect Reports per 1,000 Children, Ventura County



Center-Based & Family Child Care

When choosing child care, parents have a choice; they can choose center-based or family child care. Child care centers must be licensed through the California Department of Social Services, Community Care Licensing Division and may obtain licenses for infant care, preschool care or school-age care. Similar to the center-based care, family child care is licensed through the State of California. A family child care home must be in the licensee's own home, and reflect a home-like environment. Small family child care homes serve up to 8 children and large family child care homes serve up to 14 children. Center-based and family child care homes can be license-exempted as long as they abide by specific regulations.

Non-Subsidized & Subsidized Child Care

Non-subsidized spaces are utilized by *private pay families* in child care centers and family child care homes, and are operated by community based organizations, churches, individuals, non-profits and for-profits.

Subsidized spaces may be available for families needing assistance in paying for child care. Family eligibility is based on a variety of needs determined by state and federal regulations. Eligible families are low income and also working, seeking employment, enrolled in education or job training programs, homeless or medically incapacitated or referred by Child Protective Services.

Alternative Payment Program (APP or AP Programs)

Funded by the State of California, these programs subsidize the child care costs for eligible families. Parents may choose from family child care homes, child care centers, or license-exempt care providers. Children are eligible for child care services until their 13th birthday.

After School Programs

The After School Education and Safety (ASES) Program is a state-funded program serving students at sixty-seven (67) elementary and middle schools throughout Ventura County. The program is designed to improve academic achievement and activities align with school curricula. It is the intent of ASES Program legislation to encourage schools and school districts to provide safe and educationally enriching alternatives for children and youth during non-school hours. After-school and before-school services are provided at no cost to participating families. The 21st Century Community Learning Centers are funded by five-year federal grants.





Head Start

The U.S. Department of Health and Human Services funds Head Start. Child Development Resources of Ventura County, Inc. is the Head Start grantee for Ventura County. Head Start eligibility is among the most stringent in Ventura County as it is based on the federal poverty level, which is \$24,250 per year for a family of four.

State-Funded Preschools

The California Department of Education funds state-funded preschools. Administered through local educational agencies, colleges, community-action agencies and private nonprofit agencies. State funded pre-kindergarten program use the state median income guidelines, which is \$46,896 per year for a family of four.

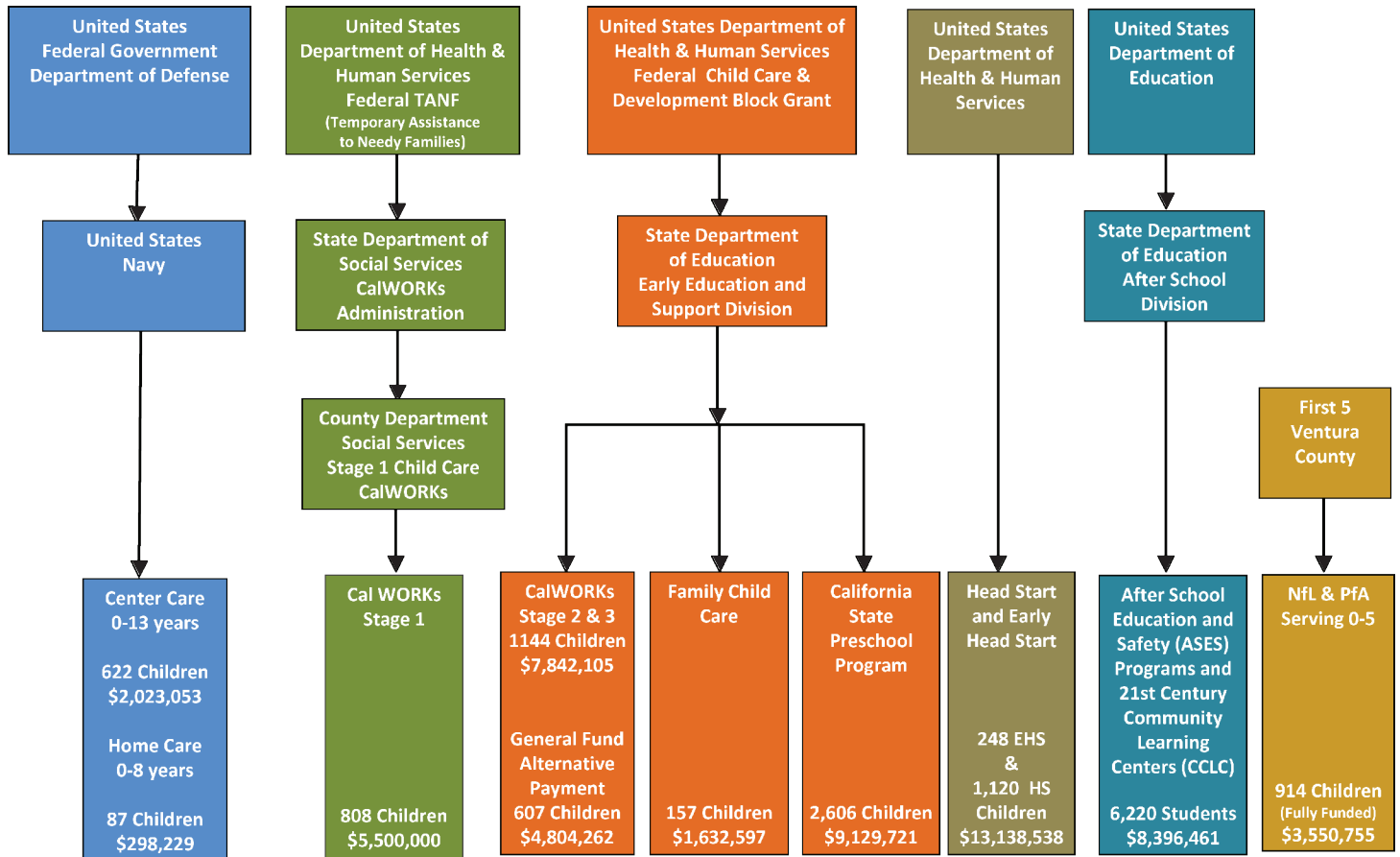
California Work Opportunities and Responsibility to Kids (CalWORKs) Child Care

CalWORKs provides temporary cash aid to families with children under the age of 19. Most adults are limited to receiving up to five years of cash aid over a lifetime. Unless exempt, CalWORKs participants are required to participate in welfare-to-work activities. For CalWORKs recipients participating in welfare-to-work activities that lead to employment and self-sufficiency, subsidized child care is available for their children up to age 12 and children with special needs and severe disabilities up to 18 years of age.

There are three stages of CalWORKs child care:

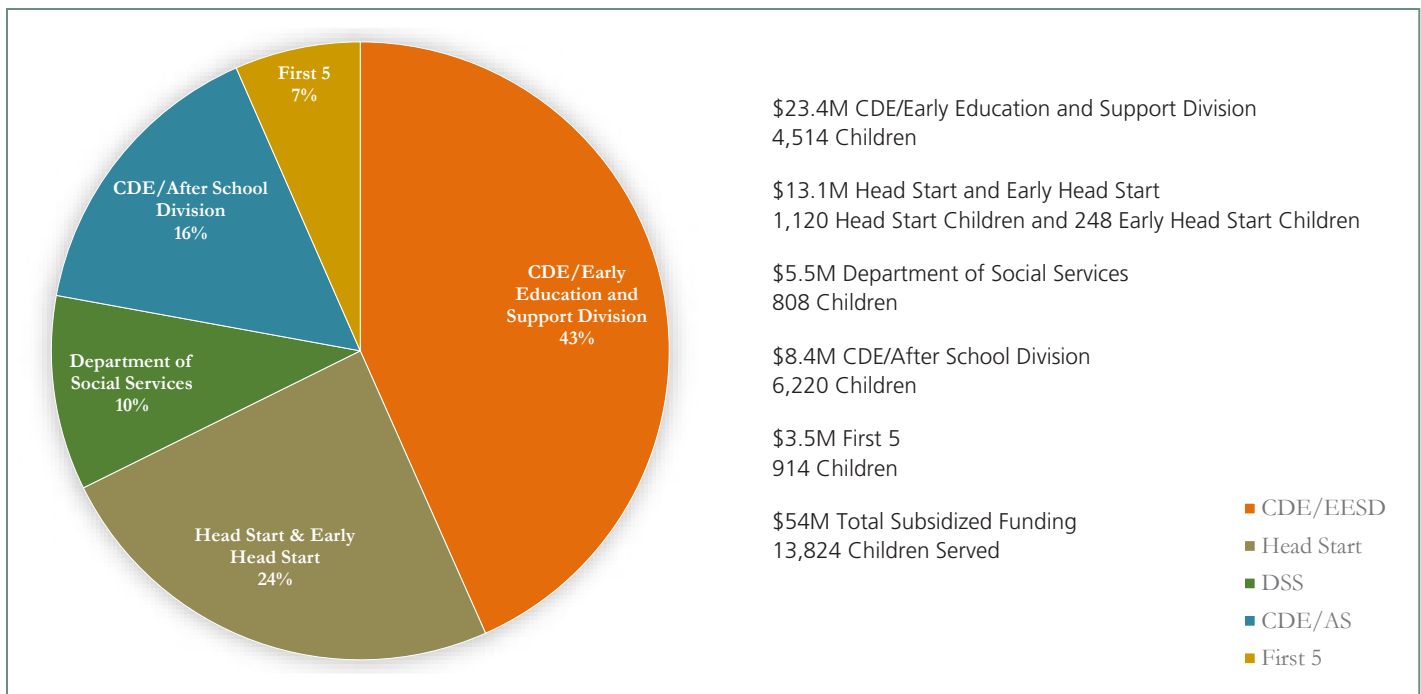
- **Stage 1 Child Care:** Stage 1 Child Care is funded by the California Department of Social Services and is locally administered by Child Development Resources through contracts with local Alternative Payment (AP) Program agencies. Stage 1 Child Care begins with a parent's entry into a County-approved welfare-to-work program or employment and continues serving them for up to six months or until their work and child care are stable.
- **Stage 2 Child Care:** CDE contracts with the local AP Program agencies Child Development Resources and Children's Home Society to administer Stage 2 Child Care, which is available to families on welfare and with stable employment. Families may receive Stage 2 Child Care for up to 24 months after they stop receiving cash aid. Parents may select from 1) licensed child care providers such as child care and development centers or family child care homes; or 2) license exempt child care providers such as family, friends, or neighbors.
- **Stage 3 Child Care:** CDE contracts with the local AP Program agencies to administer Stage 3 Child Care. Stage 3 supports families as they move off welfare and into self-sufficiency and have exhausted their up to 24 months of eligibility for Stage 2. Families can continue to receive Stage 3 Child Care until they no longer meet the income eligibility requirements or their children exceed the age limit. Parents may select from 1) licensed child care providers such as child care and development centers or family child care homes; or 2) license exempt child care providers such as family, friends, or neighbors.

Subsidized Child Care in Ventura County



Data Collected by LPC November 2015

Subsidized Child Care Spaces



Spaces in Child Care Centers

| Compiled by Child Development Resources Inc. | | Total Number of Centers | Total Center Spaces | Total Lic. Exempt Spaces | Total Lic. Spaces | Number Providing Infant Care | Infant Spaces | Infant Subsidized Spaces* | Lic. Preschool Age Spaces | Preschool Subsidized Spaces* | Lic. School Age Spaces | Total Spaces Center & Family Care | Total QRIS Spaces * |
|--|---------------------|-------------------------------|---------------------------|--------------------------------|-------------------------|------------------------------------|------------------|---------------------------------|---------------------------------|------------------------------------|------------------------------|---|------------------------|
| Zip Code | City | | | | | | | | | | | | |
| 91320 | Newbury Park Total | 20 | 1684 | 632 | 1052 | 1 | 152 | 0 | 820 | 32 | 80 | 1860 | 32 |
| 91360 | Thousand Oaks | 24 | 1700 | 446 | 1254 | 1 | 6 | 0 | 1168 | 106 | 80 | 1966 | 110 |
| 91361 | Thousand Oaks | 8 | 744 | 220 | 524 | 0 | 0 | 0 | 0 | 0 | 0 | 744 | 0 |
| 91362 | Thousand Oaks | 18 | 1389 | 302 | 986 | 4 | 77 | 0 | 986 | 64 | 24 | 1453 | 68 |
| | Thousand Oaks Total | 50 | 3833 | 0 | 2764 | 5 | 83 | 0 | 2154 | 170 | 104 | 4163 | 178 |
| 91377 | Oak Park Total | 3 | 240 | 180 | 60 | 0 | 0 | 0 | 60 | 0 | 0 | 256 | 0 |
| 93001 | Ventura | 15 | 1001 | 190 | 811 | 3 | 44 | 0 | 631 | 202 | 136 | 1167 | 459 |
| 93003 | Ventura | 25 | 1802 | 60 | 1742 | 6 | 144 | 8 | 1166 | 140 | 432 | 2278 | 89 |
| 93004 | Ventura | 10 | 825 | 52 | 773 | 2 | 35 | 8 | 573 | 191 | 165 | 1145 | 96 |
| | Ventura Total | 50 | 3628 | 302 | 3326 | 11 | 223 | 16 | 2370 | 533 | 733 | 4590 | 644 |
| 93010 | Camarillo | 22 | 2219 | 608 | 1611 | 3 | 87 | 0 | 1212 | 21 | 312 | 2507 | 57 |
| 93012 | Camarillo | 3 | 158 | 0 | 158 | 0 | 0 | 0 | 60 | 0 | 98 | 284 | 0 |
| | Camarillo Total | 25 | 2377 | 608 | 1769 | 3 | 87 | 0 | 1272 | 21 | 410 | 2791 | 57 |
| 93015 | Fillmore Total | 6 | 369 | 100 | 269 | 1 | 30 | 16 | 193 | 207 | 46 | 493 | 130 |
| 93021 | Moorepark Total | 12 | 960 | 220 | 740 | 2 | 35 | 0 | 493 | 160 | 212 | 1158 | 163 |
| 93022 | Oak View | 1 | 30 | 0 | 30 | 0 | 0 | 0 | 30 | 0 | 0 | 62 | 0 |
| 93023 | Ojai | 13 | 612 | 80 | 532 | 2 | 23 | 0 | 397 | 76 | 112 | 664 | 20 |
| 93023/22 | Ojai / OV Total | 14 | 642 | 80 | 562 | 2 | 23 | 0 | 427 | 76 | 112 | 726 | 20 |
| 93030 | Oxnard | 24 | 2530 | 1420 | 1110 | 1 | 20 | 31 | 987 | 644 | 103 | 3308 | 672 |
| 93033 | Oxnard | 27 | 1706 | 440 | 1266 | 2 | 27 | 40 | 1199 | 1287 | 40 | 2708 | 1275 |
| 93035 | Oxnard | 3 | 220 | 190 | 30 | 0 | 0 | 0 | 30 | 71 | 0 | 780 | 90 |
| 93036 | Oxnard | 10 | 454 | 0 | 454 | 0 | 0 | 12 | 355 | 434 | 99 | 952 | 452 |
| | Oxnard Total | 64 | 4910 | 2050 | 2860 | 3 | 47 | 83 | 2571 | 2436 | 242 | 7748 | 2489 |
| 93040 | Piru Total | 0 | 0 | 0 | 0 | 0 | 0 | 0 | 0 | 0 | 0 | 14 | 0 |
| 93041 | Port Hueneme Total | 4 | 197 | 54 | 143 | 0 | 0 | 0 | 96 | 154 | 47 | 467 | 88 |
| 93060 | Santa PaulaTotal | 14 | 883 | 660 | 223 | 0 | 0 | 2 | 223 | 233 | 0 | 1161 | 235 |
| 93063 | Simi Valley | 21 | 2187 | 800 | 1387 | 3 | 36 | 0 | 1008 | 0 | 343 | 2587 | 17 |
| 93065 | Simi Valley | 22 | 1893 | 535 | 1358 | 3 | 60 | 0 | 854 | 80 | 444 | 2311 | 89 |
| | Simi Valley Total | 43 | 4080 | 1335 | 2745 | 6 | 96 | 0 | 1862 | 80 | 787 | 4898 | 106 |
| 93066 | Somis Total | 0 | 0 | 0 | 0 | 0 | 0 | 0 | 0 | 0 | 0 | 0 | 0 |
| | Grand Total | 305 | 23803 | 6221 | 16513 | 34 | 776 | 117 | 12541 | 4102 | 2773 | 30325 | 4142 |

*Ventura County Office of Education, Early Childhood Programs, QRIS spaces as of November, 2015

Spaces in Family Child Care Homes

| Zip Code | City | Child Development Resources Inc. | Total Number of Sm & Lg Homes | Size of Facility*** | | Total Number of Spaces | Number Providing Infant Care** | Number Providing Evening Care | Number Providing Weekend Care | Total Spaces Center & Family Care | Total QRIS Spaces* |
|---------------------|---------------|----------------------------------|-------------------------------|---------------------|------|------------------------|--------------------------------|-------------------------------|-------------------------------|-----------------------------------|--------------------|
| 91320 | Newbury Park | Total | 19 | 15 | 4 | 176 | 17 | 1 | 1 | 1860 | 32 |
| 91360 | Thousand Oaks | | 28 | 21 | 7 | 266 | 26 | 0 | 1 | 1966 | 110 |
| 91361 | Thousand Oaks | | 0 | 0 | 0 | 0 | 0 | 0 | 0 | 744 | 0 |
| 91362 | Thousand Oaks | | 8 | 8 | 0 | 64 | 8 | 1 | 1 | 1453 | 68 |
| Thousand Oaks Total | | 36 | 29 | 7 | 330 | 34 | 1 | 2 | 2 | 4163 | 178 |
| 91377 | Oak Park | Total | 2 | 2 | 0 | 16 | 2 | 0 | 0 | 256 | 0 |
| 93001 | Ventura | | 17 | 12 | 5 | 166 | 15 | 3 | 2 | 1167 | 459 |
| 93003 | Ventura | | 49 | 35 | 14 | 476 | 48 | 9 | 2 | 2278 | 89 |
| 93004 | Ventura | | 34 | 26 | 8 | 320 | 34 | 4 | 1 | 1145 | 96 |
| Ventura Total | | 100 | 73 | 27 | 962 | 97 | 16 | 5 | 5 | 4590 | 644 |
| 93010 | Camarillo | | 30 | 22 | 8 | 288 | 28 | 5 | 4 | 2507 | 57 |
| 93012 | Camarillo | | 12 | 7 | 5 | 126 | 12 | 2 | 2 | 284 | 0 |
| Camarillo Total | | 42 | 29 | 13 | 414 | 40 | 7 | 6 | 6 | 2791 | 57 |
| 93015 | Fillmore | Total | 14 | 12 | 2 | 124 | 14 | 2 | 2 | 493 | 130 |
| 93021 | Moorpark | Total | 21 | 16 | 5 | 198 | 21 | 1 | 1 | 1158 | 163 |
| 93022 | Oak View | | 4 | 4 | 0 | 32 | 3 | 1 | 0 | 62 | 0 |
| 93023 | Ojai | | 5 | 3 | 2 | 52 | 4 | 0 | 0 | 664 | 20 |
| Ojai / OV Total | | 9 | 7 | 2 | 84 | 7 | 0 | 0 | 0 | 726 | 20 |
| 93030 | Oxnard | | 80 | 57 | 23 | 778 | 75 | 28 | 11 | 3308 | 672 |
| 93033 | Oxnard | | 102 | 71 | 31 | 1002 | 99 | 40 | 14 | 2708 | 1275 |
| 93035 | Oxnard | | 56 | 35 | 20 | 560 | 54 | 17 | 4 | 780 | 90 |
| 93036 | Oxnard | | 48 | 29 | 19 | 498 | 45 | 14 | 8 | 952 | 452 |
| Oxnard Total | | 286 | 192 | 93 | 2838 | 198 | 99 | 37 | 37 | 7748 | 2489 |
| 93040 | Piru | Total | 1 | 0 | 1 | 14 | 1 | 0 | 0 | 14 | 0 |
| 93041 | Port Hueneme | Total | 27 | 18 | 9 | 270 | 26 | 14 | 4 | 467 | 88 |
| 93060 | Santa Paula | Total | 28 | 19 | 9 | 278 | 29 | 11 | 6 | 1161 | 235 |
| 93063 | Simi Valley | | 41 | 29 | 12 | 400 | 29 | 4 | 0 | 2587 | 17 |
| 93065 | Simi Valley | | 44 | 33 | 11 | 418 | 41 | 8 | 2 | 2311 | 89 |
| Simi Valley Total | | 85 | 62 | 23 | 818 | 70 | 12 | 2 | 2 | 4898 | 106 |
| 93066 | Somis | Total | 0 | 0 | 0 | 0 | 0 | 0 | 0 | 0 | 0 |
| Grand Total | | 670 | 474 | 195 | 6522 | 556 | 164 | 66 | 66 | 30325 | 4142 |

*Ventura County Office of Education, Early Childhood Programs. QRIS spaces as of November, 2015

** Infant refers to a child zero to 24 months of age. A provider caring for infants may take two, three, or four infants depending on the ages and number of other children being cared for at the time.

The number of family child care spaces is based on maximum licensed capacity, either 8 or 14. A provider may choose to care for less than their maximum capacity.

***Max infants for small FCC is 2; max infants for large FCC is 4 (totals reflect maximum infant spaces available)

CHILD CARE SUPPLY



Key Trends

- 32,037 total child care center and family child care spaces in 2010
- 30,325 total child care center and family child care spaces in August 2015
- 1,712 total spaces lost between 2010 and 2015
 - 1,874 family child care spaces lost
 - 162 center-based spaces gained
- 4,219* center-based spaces are subsidized or 14% of total center spaces

Reported by CDE subcontractors in Ventura County, does not include Alternative Payment placements

Child Care Centers

| Year | Total Number of Centers | Total Spaces | Total Lic. Exempt Spaces | Total Lic. Spaces | Number Providing Infant Care | Infant Spaces | Lic. Preschool Age Spaces | Lic. School Age Spaces |
|-----------------|-------------------------|--------------|--------------------------|-------------------|------------------------------|---------------|---------------------------|------------------------|
| October 1, 2010 | 303 | 23,641 | 7,313 | 16,328 | 26 | 628 | 11,784 | 3,916 |
| August 1, 2015 | 305 | 23,803 | 6,221 | 16,513 | 34 | 776 | 12,541 | 2,773 |

Family Child Care Homes

| Year | Total Number of Homes | Size of Facility | | Total # of Spaces in FCC | Family Size with Infant Spaces | Number Providing Evening Care | Number Providing Weekend Care |
|-----------------|-----------------------|------------------|-------|--------------------------|--------------------------------|-------------------------------|-------------------------------|
| | | Small | Large | | | | |
| October 1, 2010 | 923 | 687 | 236 | 8,396 | 704 | 245 | 294 |
| August 1, 2015 | 670 | 474 | 195 | 6,522 | 556 | 164 | 66 |

Source: Child Development Resources, Inc.

Child Care Supply and Demand as of 2015

Supply

30,325 estimated child care supply:

- 23,803 child care center spaces
 - 4,997 subsidized center spaces
- 6,522 family child care spaces

Demand for 0-5 year old subsidized spaces

- 11,776 children in poverty
- 4,997 subsidized spaces available
- 6,779 gap
- 58% of 0-5 year olds in poverty not being served

Demand for 0-12 year old spaces

- 94,946 potential spaces needed (based on 67% with parents in the workforce)
- 30,325 available spaces
- 64,621 gap
- 68% of 0-12 year olds not being served

Sources: Child Development Resources, Inc.;
California Child Care Resource & Referral Network



CHILD CARE COST

| Type of Facility | Ventura County | California | National Average |
|-------------------------------|----------------|------------|------------------|
| Child Care Center | | | |
| Infant | \$14,544 | \$13,327 | \$4,822-\$17,062 |
| Preschool | \$10,348 | \$9,106 | \$3,997-\$12,781 |
| Family Child Care Home | | | |
| Infant | \$9,344 | \$8,462 | \$3,972-\$10,666 |
| Preschool | \$8,799 | \$7,850 | \$3,675-\$10,030 |

As a basis of comparison, California (in-state) annual tuition and fees for public four-year college: \$9,172*

Sources: California Child Care Resource & Referral Network; *Child Care Aware of America, 2015

WHAT IS QUALITY?

Rising Stars Quality and Rating Improvement System is a 5-star rating system that makes it easy for parents to identify quality early learning programs. Participating programs are rated on a scale from 1 to 5 stars: the more stars, the better the quality. Rising Stars provides family child care homes and centers with additional training and support so that they can give children a high quality early education experience and earn a higher rating.

Participating sites include state and federal subsidized sites, family child care homes, private, and faith-based pre-schools serving children birth to age 5.

- 93 sites have Rising Stars ratings as of December 2015
- 87 (95%) of the sites were rated high; 3-5 stars



Number of Preschools Rated at Each Star Level

| City | Total Number of Sites Rated | 1 Star | 2 Stars | 3 Stars | 4 Stars | 5 Stars |
|----------------------|-----------------------------|--------|---------|---------|---------|---------|
| Ventura County Total | 93 | | 6 | 24 | 48 | 15 |

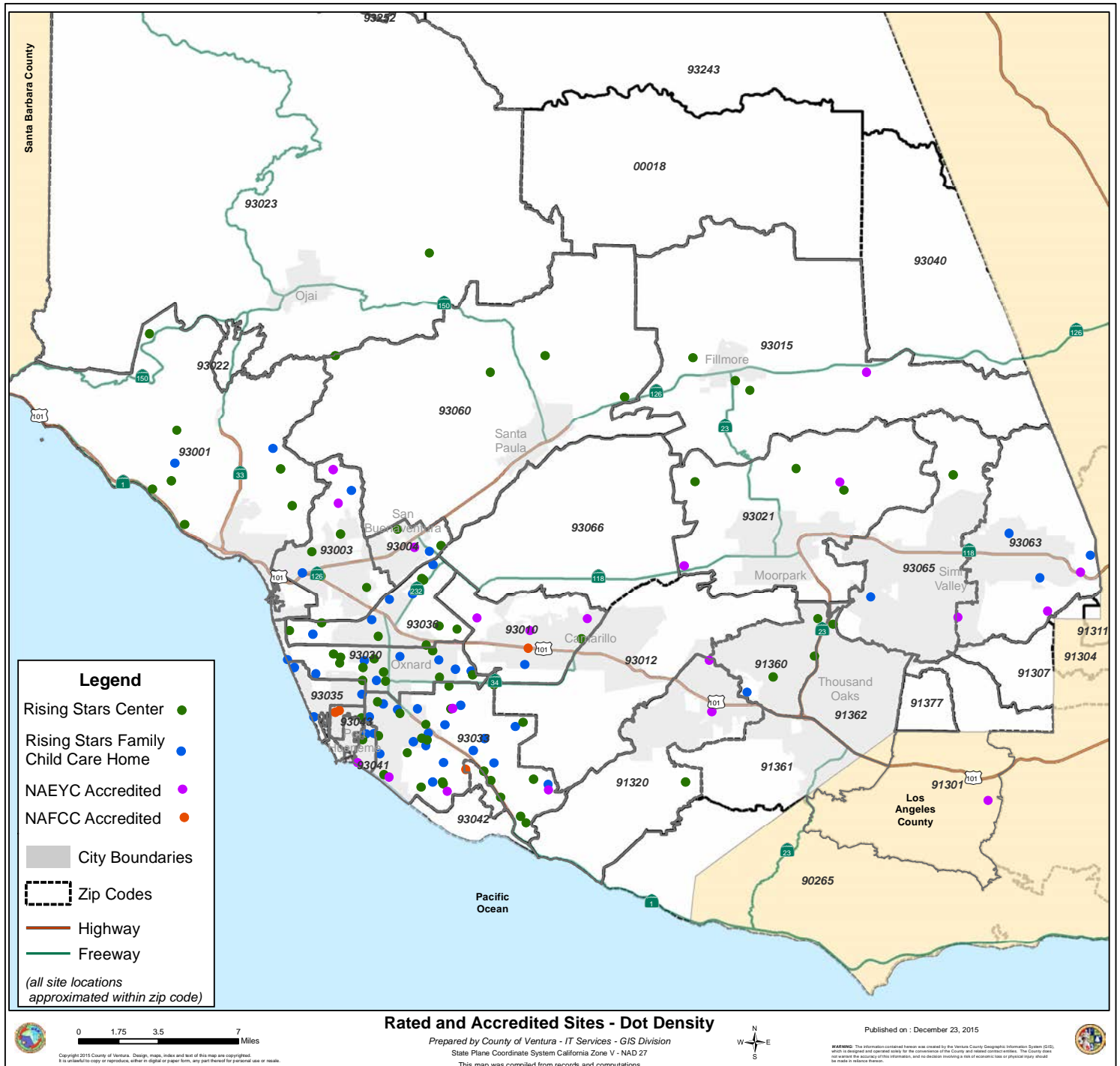


The National Association for the Education of Young Children (NAEYC) strives to promote the quality of education for all children from birth through age eight. Utilizing the accreditation system enables families to find high-quality programs for their children.

- 20 sites are NAEYC accredited

The National Association for Family Child Care (NAFCC) represents professional providers and promotes the only nationally-recognized accreditation for family child care. Accreditation is an indicator that family child care offers safe and nurturing care, complete with educational activities.

- 4 sites are NAFCC accredited



CONCLUSIONS



The Local Planning Council of Ventura County membership, appointed by the Board of Supervisors and County Superintendent, is committed to increasing the accessibility of quality programming for our youngest learners. The 2015 Child Care Needs Assessment makes clear the need to increase new spaces while also advocating for sustained and enhanced quality initiatives. This work needs to be accomplished within the county's changing demographic and economic context. While the Ventura County population has not increased since 2010, the Latino population has grown 4% (from 38% in 2010 to 42% in 2015), with 44% reporting speaking a language other than English. Also significant is the number of families living in poverty - 18% of our 0-5 year olds currently live in poverty.

Since the 2010 Needs Assessment, the recession resulted in state budget cuts of \$1 billion to the early learning system. Ventura County lost 4,000 subsidized spaces between 2012 and 2014. The number of center-based spaces remains unchanged since 2010 and the number of family child care homes has decreased by 27%. While spaces are gradually being restored, the demand for these programs continues to exceed supply. Currently, only 1 in 2 children living in poverty, has access to a subsidized child care space.

Affordable child care is an important economic driver, keeping Ventura County adults working. In 2015, a family of four needed an annual income of \$85,713/month for a modest standard of living with child care representing the second largest expense behind housing and utilities. The high cost of living in Ventura County coupled with income insecurity often impacts a family's ability to access high quality child care.

A growing body of research indicates that it is the quality of early learning experiences that most impacts children's long-term outcomes. Ventura County has participated in quality initiatives for over 15 years, most recently with federal and state support in implementing the Quality Rating and Improvement System. Sustaining this work and ensuring quality is available in all early learning/childcare settings is a priority for the Local Planning Council. Additionally, quality efforts must address the whole early childhood system, including health, parent education and engagement, and social emotional support. Quality will be achieved through a systematic, collaborative approach that includes the entire early learning community.

The 2016-21 Local Planning Council Strategic Planning Process will address the gaps and barriers identified in the Needs Assessment. Particular areas of focus will include advocating for increased funding to support spaces and establishing and maintaining high quality for all programming to ensure our children's success in school and life.

Methodology and Disclaimer

The 2015 Ventura County Child Care Needs Assessment is the result of a comprehensive demographic analysis using data from the United States Census, the United States Census American Community Survey, the California Department of Education, county and city reports, and other sources of data. The data represents a point in time. The most recent statistics were used in all instances; however, in some situations, more recent statistics, while preferable, were not available.

Printed January 2016

| Member Name | Member's Organization Affiliation |
|------------------------------------|--|
| Dawn Anderson | VCOE – Comprehensive Heath & Prevention Programs |
| Nancy Ballard | Ventura County Public Health |
| Linda Bays | Ventura County Public Health |
| Joseph Castañeda-Carrera | El Centrito Family Learning Centers |
| Patricia Cervantes | Santa Clara Valley NfL |
| Rachel Champagne | Child Development Incorporated |
| Amy Cranston | VCOE – Expanded Learning |
| Jennifer Escamilla | CA Association for the Education of Young Children |
| Janet Fleming. | Child Development Resources – Early Head Start |
| Loretta Galaviz. | Ventura Unified School District |
| Laurie Jordan | Rainbow Connection |
| Kim Karkos | Ventura Community College |
| Alma Magaña | Family Child Care Provider |
| Dr. Carola Matera | CSUCI – Early Childhood Studies |
| Tanya McMahan. | Child Development Resources, Inc. – R & R |
| Johanna Pimentel | Moorpark College Child Development Center |
| Petra Puls. | First 5 Ventura County |
| Dr. Elizabeth Quintero. | CSUCI – Early Childhood Studies |
| Alicia Ramirez | Child Development Resources – Head Start |
| Lisa Sadowsky | VCOE CalSAFE |
| Pegi Steinberg | Ventura County Child Care Association |
| Adria Taha-Resnick. | CA Association for the Education of Young Children |
| Dr. Susan Walsh | CA Preschool Instruction Network |
| Pat Wilka | Professional Association for Childhood Education |
| Patty Zoll | County of Ventura Human Resources |

Dr. Carola Matera and Adria Taha-Resnick, Co-Chairs

VCOE Staff Coordination: Carrie Murphy, Director; David Lindee, Project Specialist



Local Planning Council
 of Ventura County

The United Voice for Early Care and Education

www.venturalpc.org